

RACK SCANNERS INSTALLATION AND CONNEXION WITH LabCollector

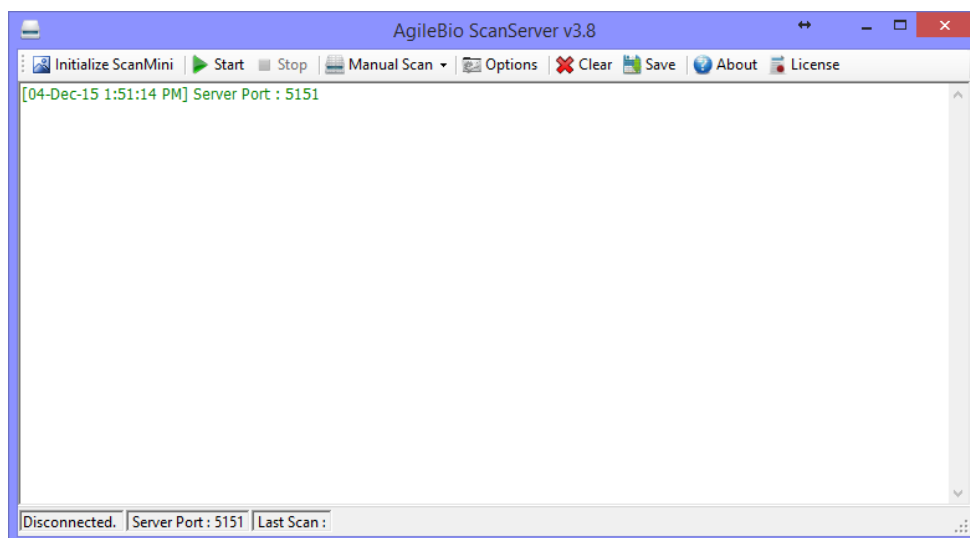
Summary

1-	AgileBio ScanServer installation	1
2-	LabCollector setup	2
3-	Rack Scanners installation and connection	2
3-1.	Ziath Scanner	3
3-2.	Tracxer scanner	5
3-3.	FluidX scanner	7

1- AgileBio ScanServer installation

This Windows software is a server listener to directly connect LabCollector with Rack Scanners. Just download the ZIP folder on <http://www.labcollector.com/demo/download-demo/> and decompressed the folder under \AgileBio\ to have \AgileBio\AgileBioScanServer.

To start the software, use the executive file *AgileBioServer.exe*. Execute this file performing a right click and choose **Run as administrator**.



2- LabCollector setup

To use **Sample's batch tools** add-on, the scanner have to be registered in LabCollector under **ADMIN > Setup > Rack Scanners**.

Fill the form with the required information.

The Scanner IP corresponds to the IP address of PC connected to the scanner. To have this information, launch the command prompt under this PC, and type ipconfig/all. The IP number is listed under IPv4 Address.

By default, the port is 5151.

+	Scanner Name:	<input type="text"/>	(give a name or ref to this scanner)
	Scanner IP & Port:	<input type="text"/>	Port: <input type="text"/>
	Scanner Model	Choose <input type="text"/>	

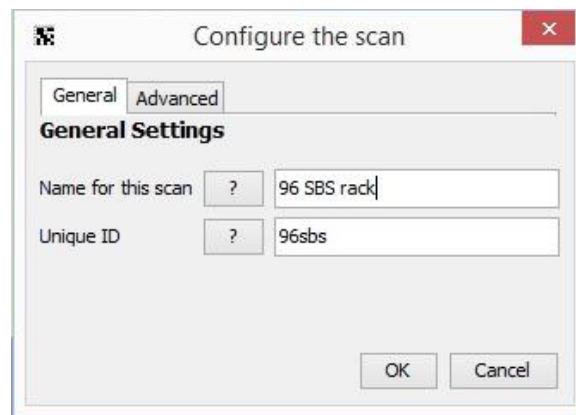
3- Rack Scanners installation and connection

Scanners always work with their own software. AgileBio ScanServer allows converting scans' results in rack/tray map file comprehensible by LabCollector using **Samples Batch Tools** add-on.

3-1. Ziath Scanner

Read the [user guide from Ziath](#) for more information.

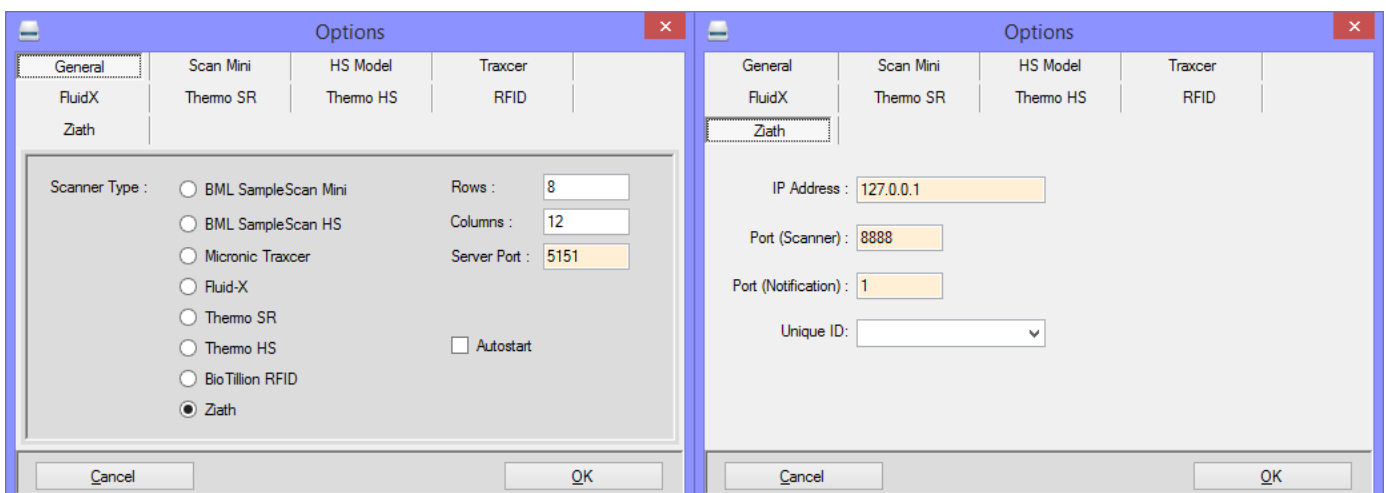
- Download and install the appropriate driver before connecting the scanner and installing the DataPaq™ software.
- Connect the scanner to the computer and switch on using the button at the back.
- Install **DataPaq™**.
- Configure your scanner in DataPaq™, and notably **unique ID** used for remote interaction (Image source: Ziath).



Under [AgileBio ScanServer](#), use the tab **Options**.

In *General* section, leave values by default. The server port is the same as in [LabCollector setup](#). Check the box Autostart if you want to start scanning using **Samples Batch Tools** Add-on.


In *Ziath* section, IP address, scanner port and notification port are by default. You have to choose in the list, the **unique ID** corresponding to your rack that you define in DataPaq™ ([see below](#)).



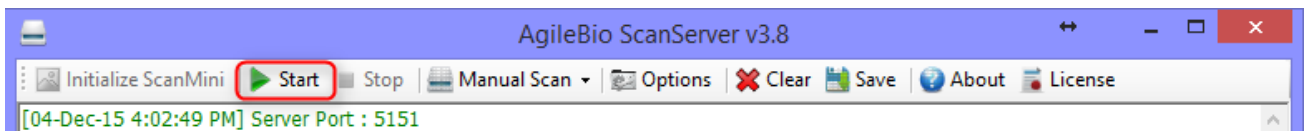
Check your firewall about the Ports security.

Now, you are ready to scan your rack!

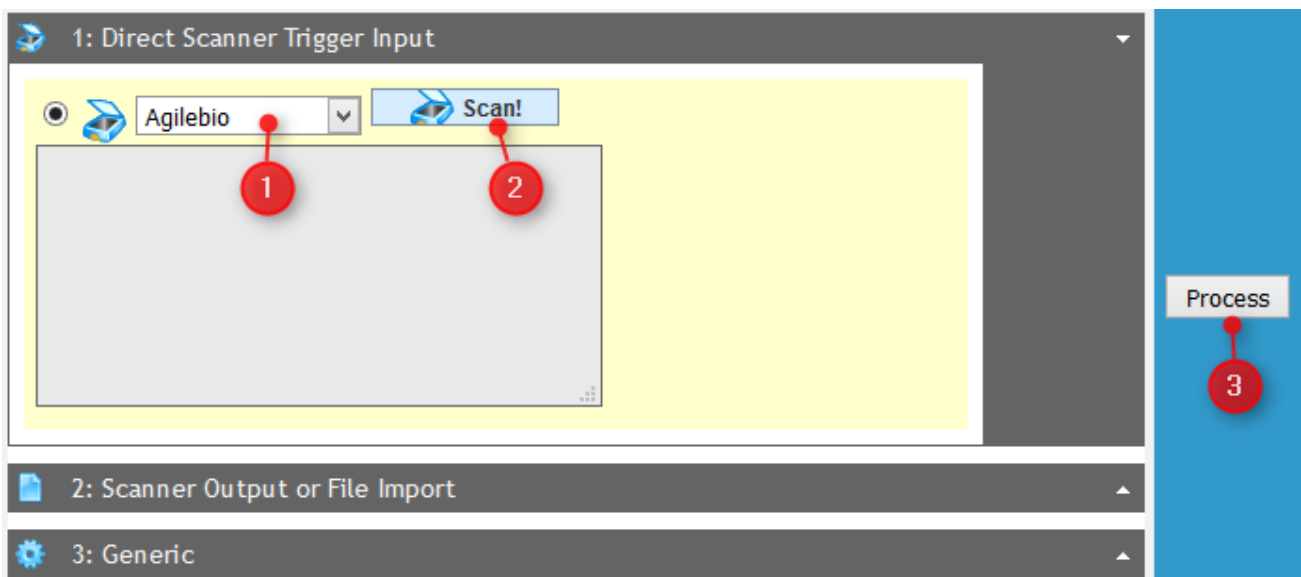
1. Start your scanner and open AgileBio Scan Server (DataPaq™ will be open in the background)

 **Be careful that Ziath scanners usually have an automatic sleeping mode which can be removed. If the scanner is sleeping, it will not react to scan requests.**

2. Start AgileBio ScanServer process



3. In **Samples Batch Tools** Add-on, choose in the list the rack that you [setup](#) in LabCollector, then click on **Scan!** button, the rack/box map preview appears, then **Process** to complete the import.



 **JAVA has to be updated to allow to the Scan! button to be active.**

In option part, you can select the **rack origin**:

- New tube rack or existing rack with direct barcode read
- Existing tube rack, enter the rack ID/barcode corresponding
- Replicate existing rack, select tube rack/box in the list. In this case, box will be saved as secondary storage of existing samples.

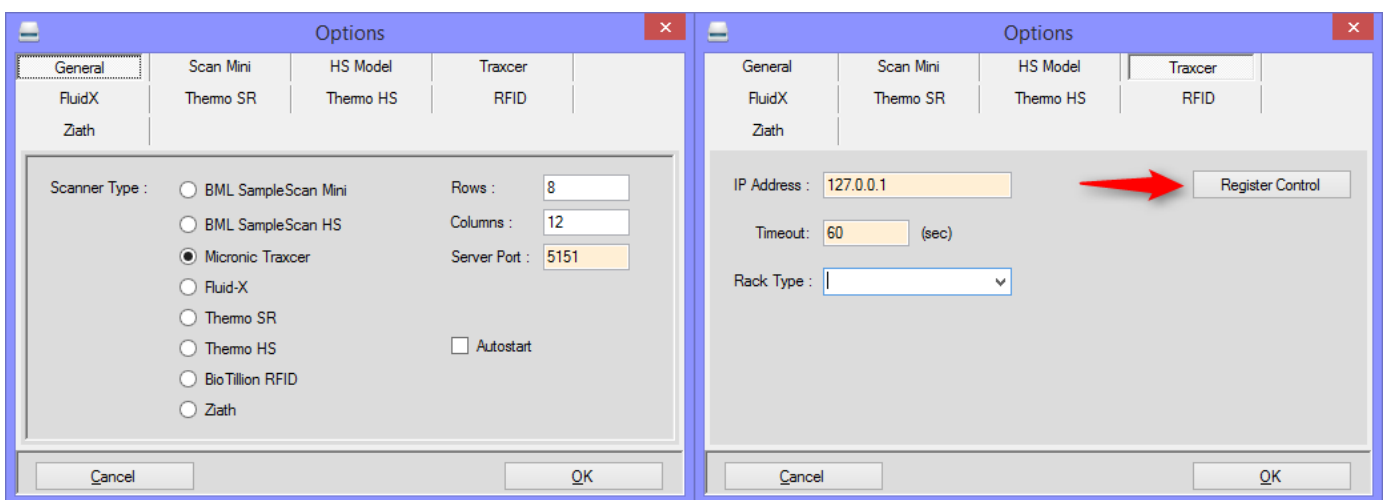
3-2. Traxcer scanner

Install your scanner and the latest version of Traxcer code reader software.

Under AgileBio ScanServer, use the tab **Options**.

In *General* section, leave values by default. The server port is the same as in [LabCollector setup](#). Check the box Autostart if you want to start scanning using **Samples Batch Tools** Add-on.


In *Traxcer* section, IP address and Timeout (60 sec) are by default. If you want, choose in the list the rack type defines in Traxcer software. Use the *Register Control* button to register DLL.



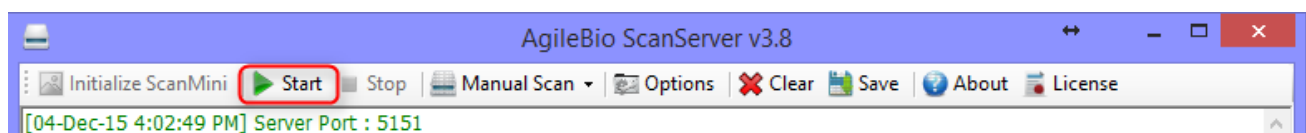
 **Check your firewall about the Ports security.**

Now, you are ready to scan your rack!

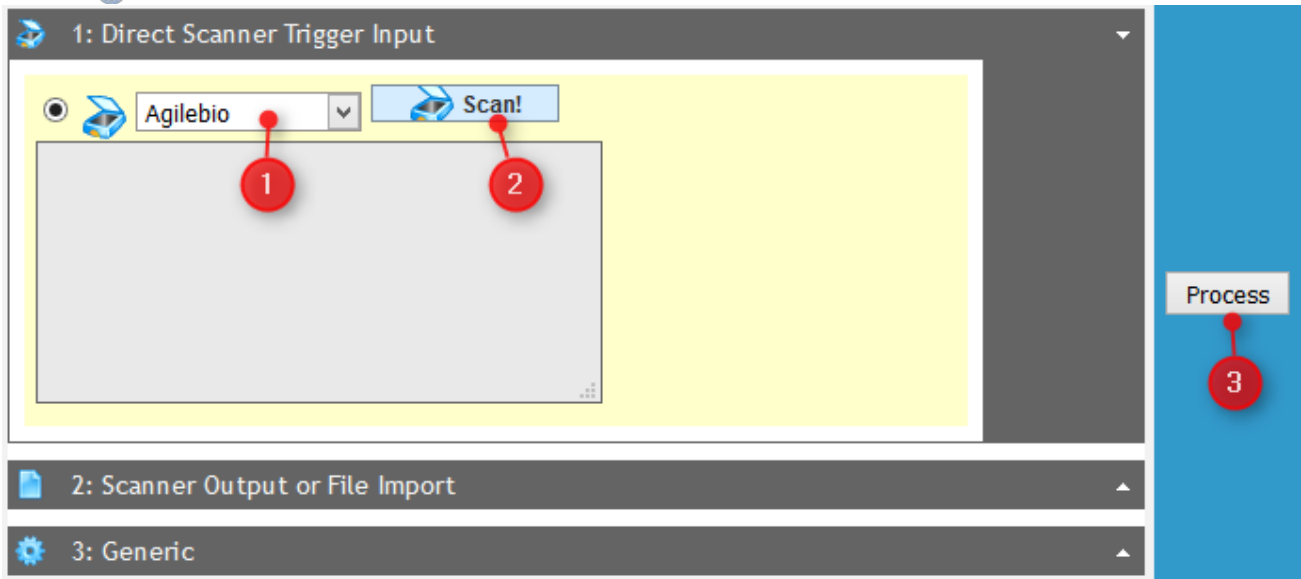
1. Start your scanner and open AgileBio Scan Server.

 **Traxcer software needs to be open in the background.**

2. Start AgileBio ScanServer process



3. In **Samples Batch Tools** Add-on, choose in the list the rack that you [setup](#) in LabCollector, then click on **Scan!** button, the rack/box map preview appears, then **Process** to complete the import.



 **JAVA has to be updated to allow to the Scan! button to be active.**

In option part, you can select the **rack origin**:

- New tube rack or existing rack with direct barcode read
- Existing tube rack, enter the rack ID/barcode corresponding

Replicate existing rack, select tube rack/box in the list. In this case, box will be saved as secondary storage of existing samples.

3-3. FluidX scanner

Install your scanner and FluidX IntelliCode™ Decoding software.

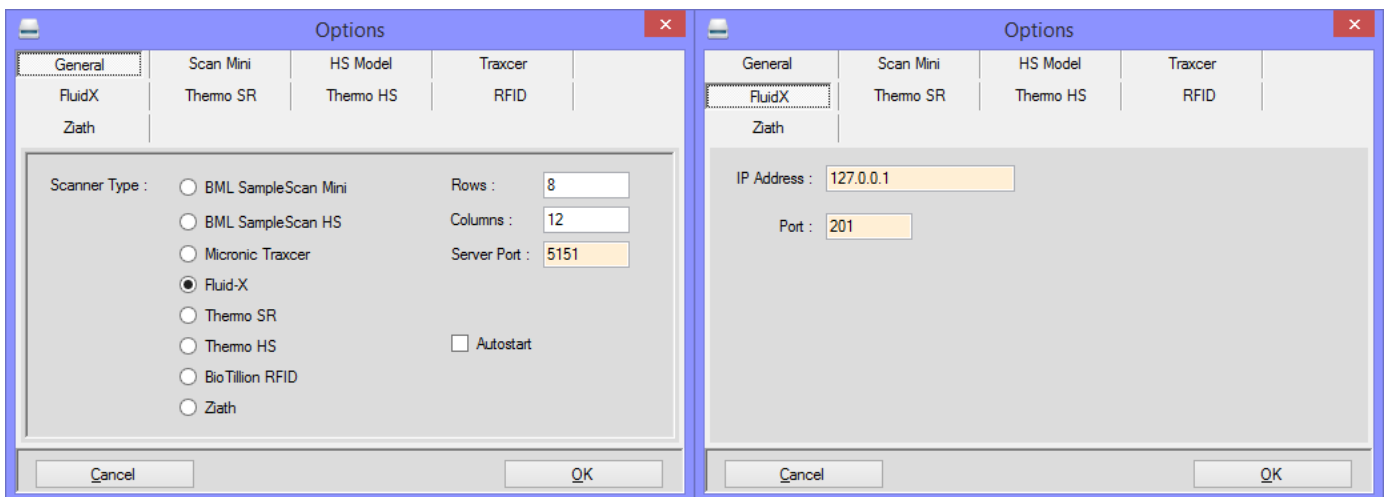
Copy both files "RemoteEnable.bat" and "xtr96.xrs" from `\AgileBio\AgileBioScanServer\FluidX User Deploy` inside the IntelliCode installation folder.

Create a shortcut to "RemoteEnable.bat" on your desktop, and run this shortcut every time before running AgileBio ScanServer.

Under AgileBio ScanServer, use the tab **Options**.

In *General* section, leave values by default. The server port is the same as in [LabCollector setup](#). Check the box Autostart if you want to start scanning using **Samples Batch Tools** Add-on.

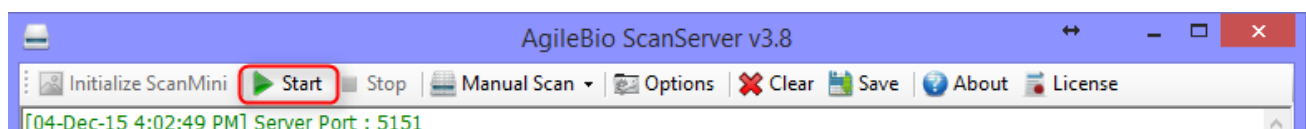
In *FluidX* section, IP address and Port are by default.



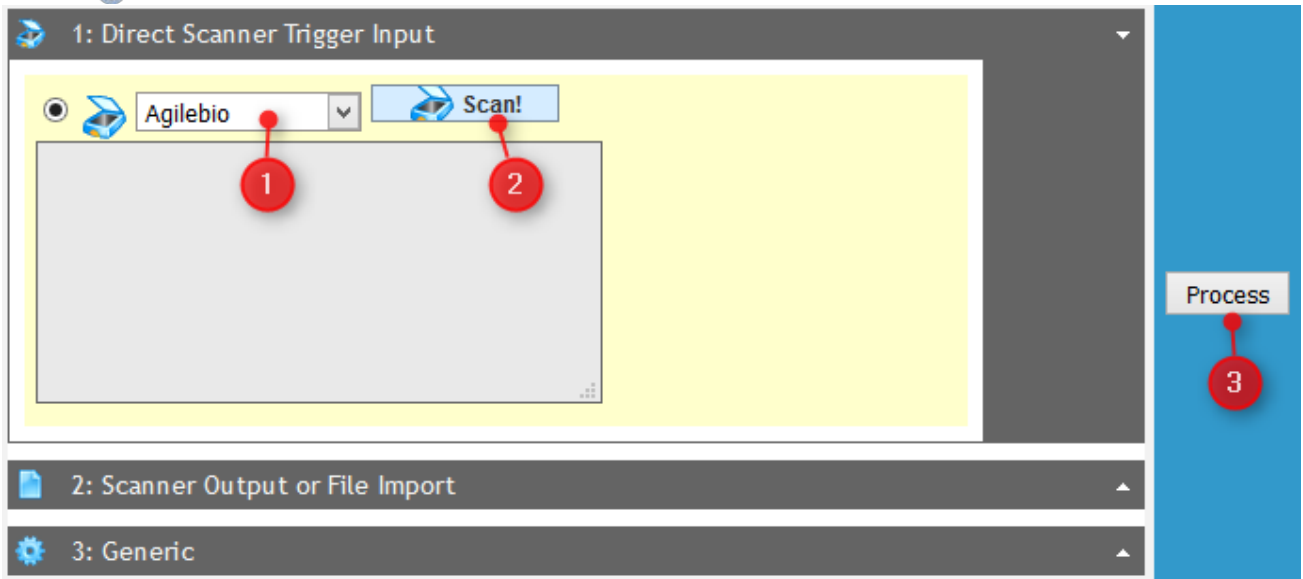
 **Check your firewall about the Ports security.**

Now, you are ready to scan your rack!

1. Start your scanner and run "RemoteEnable.bat" shortcut.
2. Open AgileBio Scan Server.
3. Start AgileBio ScanServer process



4. In **Samples Batch Tools** Add-on, choose in the list the rack that you [setup](#) in LabCollector, then click on **Scan!** button, the rack/box map preview appears, then **Process** to complete the import.



 **JAVA has to be updated to allow to the Scan! button to be active.**

In option part, you can select the **rack origin**:

- New tube rack or existing rack with direct barcode read
- Existing tube rack, enter the rack ID/barcode corresponding

Replicate existing rack, select tube rack/box in the list. In this case, box will be saved as secondary storage of existing samples.