

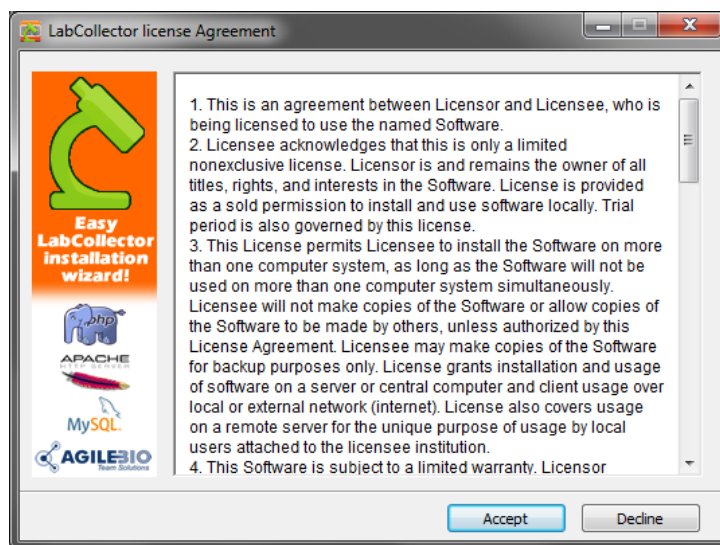
## LabCollector Windows Installation

LabCollector is installed using the **Setup wizard** (On XP, Vista, Win7, Win8, Win10, Windows Server 2003, 2008, 2012, 2016).

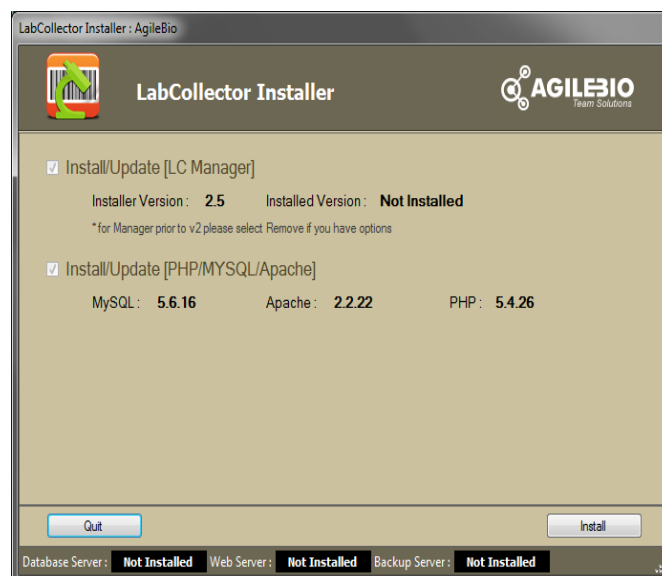
On our website [www.LabCollector.com](http://www.LabCollector.com), download the installation pack: LabCollector\_Setup2.exe.

Execute downloaded file. The wizard installs and configures LabCollector needed parts like Apache server, PHP script language and MySQL database.

i. **ACCEPT** installation



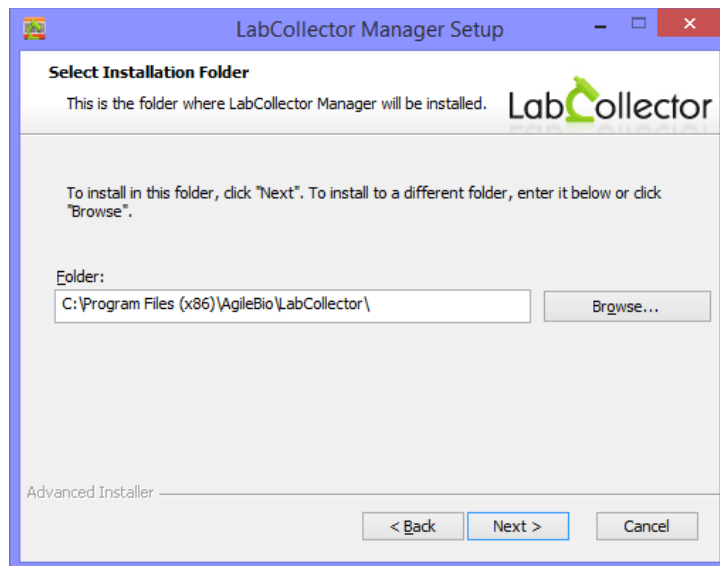
ii. Then click on **INSTALL**.



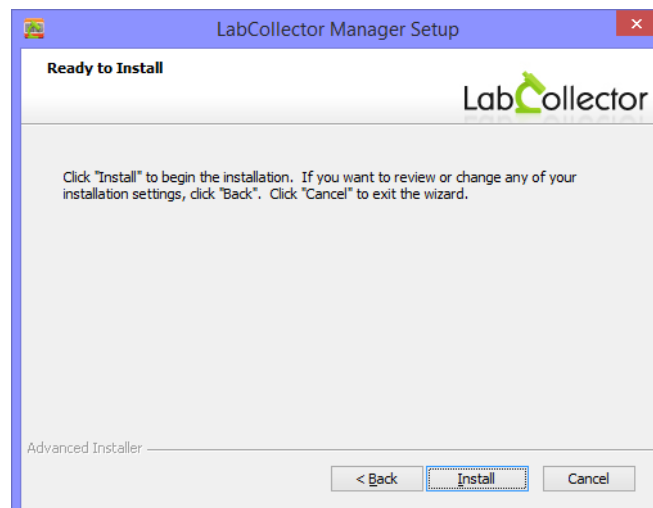
iii. Now, start the installation on LabCollector Manager. Click on **NEXT** button.



Then chose the folder where LabCollector Manager will be installed and click on **NEXT**.



Click on **INSTALL** to begin the installation.



The installation is nearly finished. Click on **FINISH** button.



- iv. Restart your computer and finish the installation by executing the server manager called LabCollector Manager.
- v. Once installed, LabCollector server can be started with the manager, by clicking on the **START ALL** green button.



To adequately use the LabCollector Manager please use the **Readme** file under Help menu on the manager.